

A photograph of a modern dining room in a chalet. The room features light-colored wooden walls and a wooden ceiling. A long wooden dining table is set with white plates, glasses, and red napkins. A red curtain hangs by the window. A flat-screen TV is mounted on the wall. The text 'est. 2006' is visible in the top right corner of the image.

est. 2006

F & P  
TRAVEL

## CHALET ARBÉ

### SELF-CATERED *sleeps 6-7*

In the heart of Méribel Village, and just 180m from the Golf chairlift and Lapin piste, Arbé is a skier's favourite. Cosy and comfortable, it combines traditional and contemporary alpine design. Arbé is located just behind the local bakery and just a stone's throw from the local amenities; bar, restaurants and the bus stop with regular buses to Méribel Centre. The chalet consists of three double/ twin rooms, all with en-suite bathrooms, and an extra single room so can sleep up to 7. Enter the chalet on the upper floor into a good sized dining area with lovely views across the Méribel valley, you will also find on this floor - the kitchen, single room and one of the double/ twin rooms. Downstairs there is a comfortable living area with ample seating providing the perfect setting to relax after a long day on the slopes with a glass of wine in hand. There are two double/twin bedrooms on this floor each with an en-suite bathroom with bath, sink and WC. Outside you will find a secure ski locker, boot warmers and a parking space. Chalet Arbé has all the mod cons including WiFi and flat screen televisions in all the bedrooms with UK satellite channels.

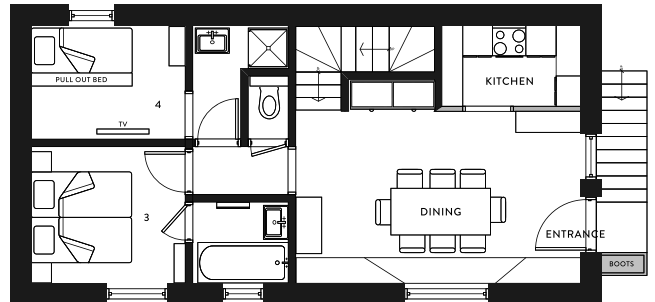
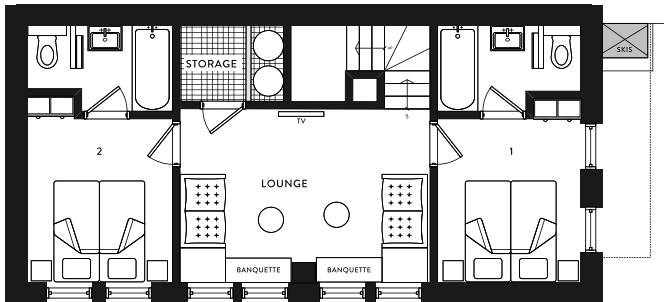
**FOR INFORMATION & BOOKING CONTACT OUR SALES TEAM AT  
HELLO@FANDPTRAVEL.COM OR ON +44 (0)1306 264005**



# THE DETAIL

## CHALET ARBE

- SLEEPS: 7
- BEDROOMS: 4, 2 EN-SUITE WITH BATH/ SHOWER & WC
- WCS: 3
- BOOT WARMERS: YES
- AMENITIES: WIFI, FLATSCREEN TV IN EACH ROOM
- LOG FIRE: NO
- COT SPACE: IN 3 BEDROOMS
- EXTRAS: BOARDGAMES, CHILDREN'S TOYS & EQUIPMENT, SNOWSHOES & SLEDGES
- DISTANCE TO SLOPES: 80M
- PARKING: 1 SPACE
- VIEW: WEST ACROSS THE VALLEY
- SPECIAL FEATURES: PROXIMITY TO PISTE, BOOT WARMERS, MODERN DESIGN



## WHAT'S INCLUDED

- **CONCIERGE:** tailor-made pre-holiday and in-resort service – we help arrange everything from ski hire, transfers, childcare, passes, restaurants, beauty & massage, you name it!
- **ACCOMMODATION:** 7 nights' accommodation
- **WELCOME:** F&P Welcome hamper and bottle of Champagne
- **TEAM IN RESORT:** dedicated service from the F&P team (Drivers and Resort Manager)
- **DRIVER SERVICE – AVAILABLE DAILY** to and from Méribel Centre between 8am and 8pm (there will be an additional charge for journeys beyond Le Praz - Courchevel). On our teams nights off the driver service will run until 10pm.
- **LINEN & TOILETRIES:** linen, towels, Bramley toiletries, and lip balms
- **ESSENTIALS IN THE CHALET:** plentiful cleaning products, dry cupboard basics, hairdryers
- **SKI HIRE:** in chalet fitting and 10% off with Slide Candy.
- **SELF-CATERED EXTRAS:** access to our Extras menu to add to your experience (set-up shop, dressing gowns, bakery deliveries, drinks, oven-ready meals, chefs etc.)





# MÉRIBEL

**WE ARE PROUD TO CALL OURSELVES  
MÉRIBEL SPECIALISTS. WE LOVE IT. IT  
IS OUR HOME AND IN OUR EYES, THE  
BEST LOCATION IN THE 3 VALLEYS.**

Guests who discover Méribel Village return year after year. It really is the perfect base for your stay in The Three Valleys. With unbeatable access to the slopes, a superb ski route home and all amenities close to hand, we're sure you'll agree it's a hidden gem. It has a unique atmosphere and is self-contained with its own mini super-market, bakery and patisserie, restaurants and a great après bar - Lodge du Village, with live bands almost every night. Other perks include the high speed Golf chair lift (never a queue), access to the 3 Valleys epic ski terrain, the easy blue 'Lapin' run into the centre of the Village and

regular public bus service (as well as our driver service). It works well for friends, families and corporate groups alike. We also have a strong network of trusted suppliers and partners that we work with to bring you the very best of Méribel. For the non-skier there is plenty to see and do around Méribel; from scenic walks, swimming, ice-skating, snowshoeing, a ride up and down the mountain to check out the scenic views, sampling the alpine restaurants or just relaxing in a deckchair in the sunshine with a book. In our opinion Méribel Village has something for everyone. Why would you look anywhere else...

[CLICK HERE FOR THE CHALET LOCATION](#)