

A photograph of a cozy, rustic living room in a chalet. The room features a high wooden ceiling with exposed beams, a large red sofa with patterned cushions, and a fireplace with a warm fire. Large windows offer a view of a snowy mountain landscape. The room is furnished with a blue armchair, a side table with a lamp, and a colorful rug.

est.2006

F & P
TRAVEL

CHALET TOURTERELLE

SELF-CATERED SLEEPS 10-12

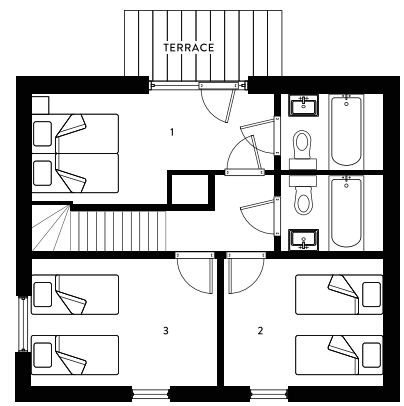
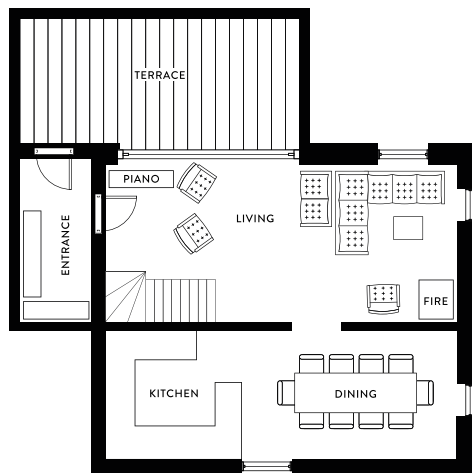
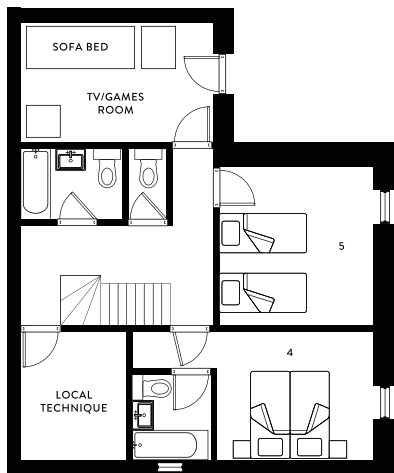
Chalet La Tourterelle is a spacious property only a couple of minutes walk from Méribel Village centre and the high-speed Golf chair lift. Benefitting from an outside sauna, log fire, extra TV room and stunning views across the valley, it is the perfect spot for a large group of friends or a family holiday in Méribel. The chalet provides generous accommodation for 10-12 arranged over 3 floors. The entrance hall with under floor heating (perfect for drying out boots) leads into the sitting room. The living area has a piano, lovely log fire, TV with two seating areas and a south-facing terrace with views across the valley. Connected to this is a generous dining area with a table which seats 12, and a modern, spacious and well-equipped kitchen. The top floor has a double bedroom with balcony and ensuite bathroom, and 2 twin rooms with a shared bathroom. The bottom floor comprises of one ensuite double room, one double/twin room with private bathroom over the hall and a TV room with a sofa bed to sleep an extra two guests. Skis are stored in the external garage and there is ample additional parking. The chalet has WiFi and UK television.

**FOR INFORMATION & BOOKING CONTACT OUR SALES TEAM AT
HELLO@FANDPTRAVEL.COM OR ON +44 (0)1306 264005**

THE DETAIL

CHALET TOURTERELL

- SLEEPS: 10-12
- BEDROOMS: 5, 2 EN-SUITE WITH BATH/SHOWER & WC, ONE SHARED BATHROOM, 1 PRIVATE BATHROOM
- OUTSIDE SAUNA
- OUTSIDE SPACE: SOUTH FACING TERRACE
- AMENITIES: WIFI, UK TELEVISION, PIANO, EXTRA TV SNUG
- LOG FIRE: YES
- COT SPACE: IN 3 BEDROOMS
- EXTRAS: BOARDGAMES, CHILDREN'S TOYS & EQUIPMENT, SNOWSHOES & SLEDGES
- DISTANCE TO SLOPES: 3-4 MINUTE WALK (DRIVER SERVICE AVAILABLE IF NEEDED)
- PARKING: PRIVATE OUTSIDE CHALET (2 CARS)
- LAUNDRY: WASHING MACHINE & DRYER
- VIEW: SOUTH ACROSS THE VALLEY
- SPECIAL FEATURES: UNRIVALLED VIEWS, SAUNA, SPACIOUS, LOG FIRE, EXTRA TV ROOM



WHAT'S INCLUDED

- **CONCIERGE:** tailor-made pre-holiday and in-resort service – we help arrange everything from ski hire, transfers, childcare, passes, restaurants, beauty & massage, you name it!
- **ACCOMMODATION:** 7 nights' accommodation
- **WELCOME:** F&P Welcome hamper and bottle of Champagne
- **TEAM IN RESORT:** dedicated service from the F&P team (Drivers and Resort Manager)
- **DRIVER SERVICE – ALL DAY:** available daily to and from Méribel Centre between 8am and 8pm (there will be an additional charge for journeys beyond Le Praz - Courchevel). On our teams nights off the driver service will run until 10pm..
- **LINEN & TOILETRIES:** linen, towels, Bramley toiletries, and lip balms
- **ESSENTIALS IN THE CHALET:** plentiful cleaning products, dry cupboard basics, hairdryers
- **SKI HIRE:** in chalet fitting and 10% off with Slide Candy.
- **SELF-CATERED EXTRAS:** access to our Extras menu to add to your experience (set-up shop, dressing gowns, bakery deliveries, drinks, oven-ready meals, chefs etc.)



MÉRIBEL

**WE ARE PROUD TO CALL OURSELVES
MÉRIBEL SPECIALISTS. WE LOVE IT. IT IS
OUR HOME AND IN OUR EYES, THE BEST
LOCATION IN THE 3 VALLEYS.**

Guests who discover Méribel Village return year after year. It really is the perfect base for your stay in The Three Valleys. With unbeatable access to the slopes, a superb ski route home and all amenities close to hand, we're sure you'll agree it's a hidden gem. It has a unique atmosphere and is self-contained with its own mini super-market, bakery and patisserie, restaurants and a great après bar - Lodge du Village, with live bands almost every night. Other perks include the high speed Golf chair lift (never a queue), access to the 3 Valleys epic ski terrain, the easy blue 'Lapin' run into the centre of the Village and regular public

bus service (as well as our driver service). It works well for friends, families and corporate groups alike. We also have a strong network of trusted suppliers and partners that we work with to bring you the very best of Méribel. For the non-skier there is plenty to see and do around Méribel; from scenic walks, swimming, ice-skating, snowshoeing, a ride up and down the mountain to check out the scenic views, sampling the alpine restaurants or just relaxing in a deckchair in the sunshine with a book. In our opinion Méribel Village has something for everyone. Why would you look anywhere else...

[CLICK HERE FOR THE CHALET LOCATION](#)